

PART OF THE N.W.1/4 OF S.W.1/4, OF SEC. 16, T.6N., R.1W., S.L.B. & M.

TAXING UNIT: 25

IN OGDEN CITY

SCALE 1" = 100'

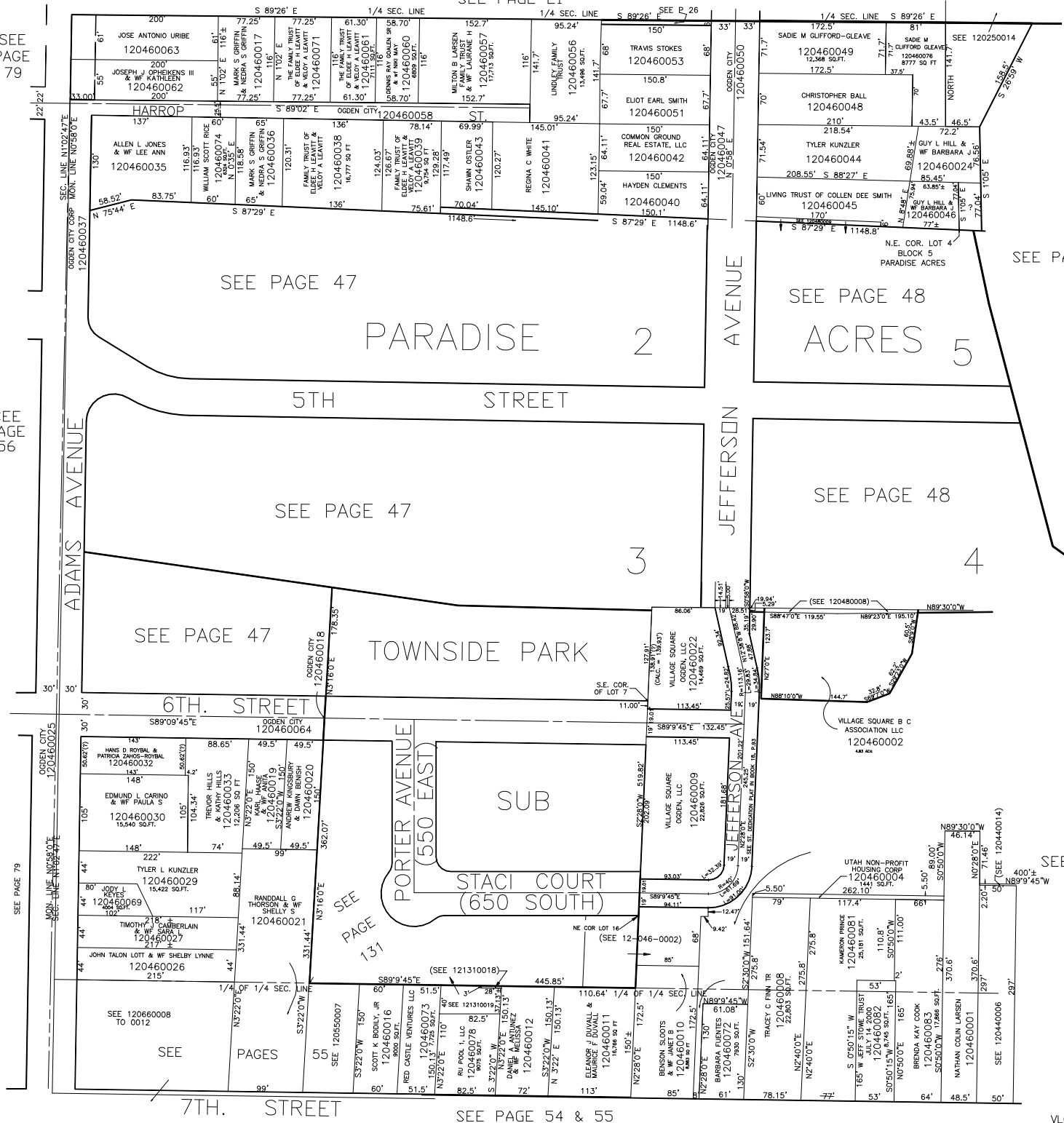
SEE PAGE 21

SEE PAGE 79

SEE PAGE 56

SEE PAGE 44

SEE PAGE 44



SEE PAGE 47

PARADISE 2 ACRES 5

5TH STREET

SEE PAGE 47

SEE PAGE 47

TOWNSIDE PARK

6TH STREET

SUB

STACI COURT (650 SOUTH)

PORTER AVENUE (550 EAST)

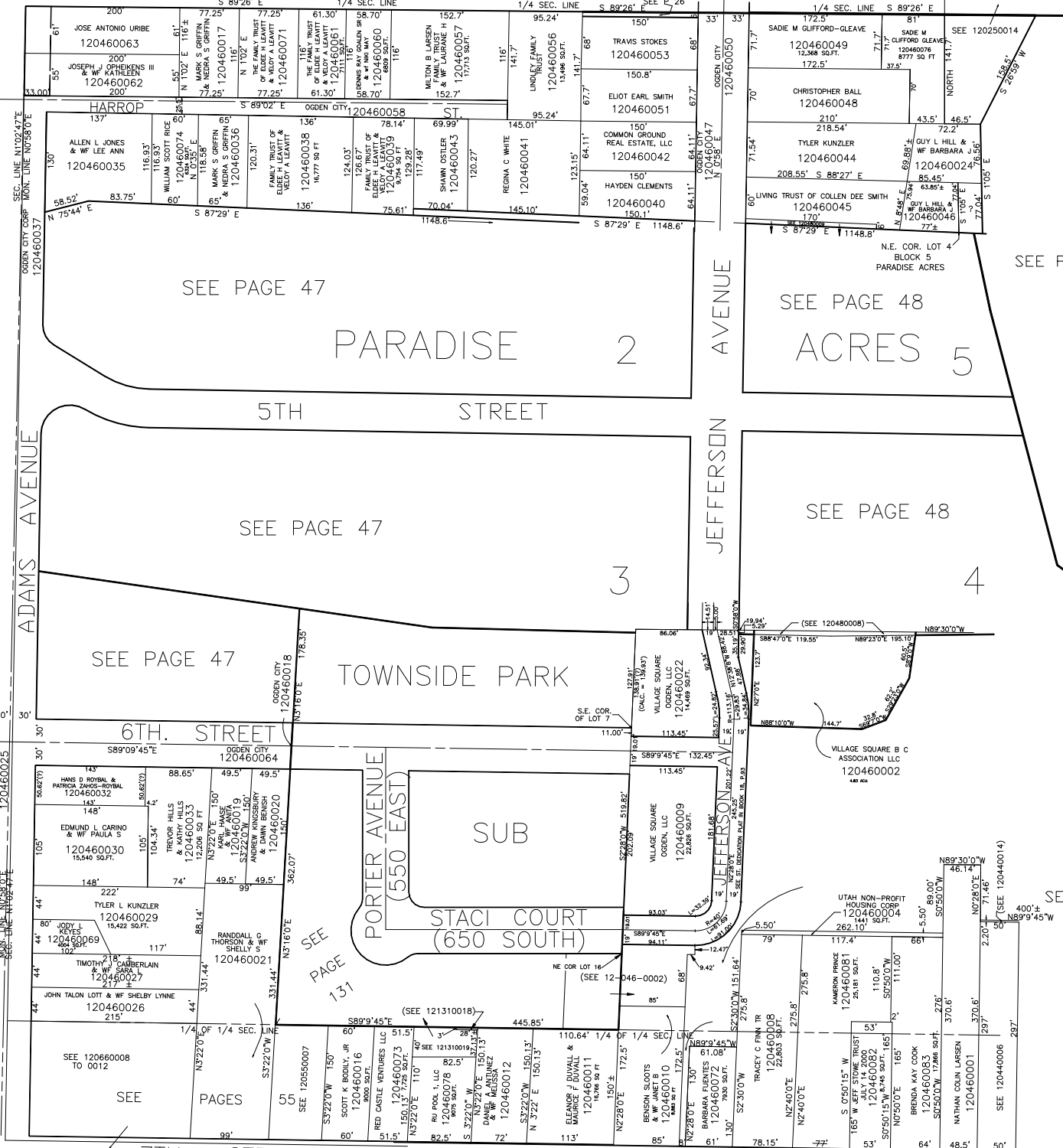
SEE PAGE 131

SEE 120660008 TO 0012

SEE 120650007

7TH STREET

SEE PAGE 54 & 55



SEE PAGE 47

PARADISE 2 ACRES 5

5TH STREET

SEE PAGE 47

SEE PAGE 47

TOWNSIDE PARK

6TH STREET

SUB

STACI COURT (650 SOUTH)

PORTER AVENUE (550 EAST)

SEE PAGE 131

SEE 120660008 TO 0012

SEE 120650007

7TH STREET

SEE PAGE 54 & 55